



Cable ID: UTP 0.58 CCA

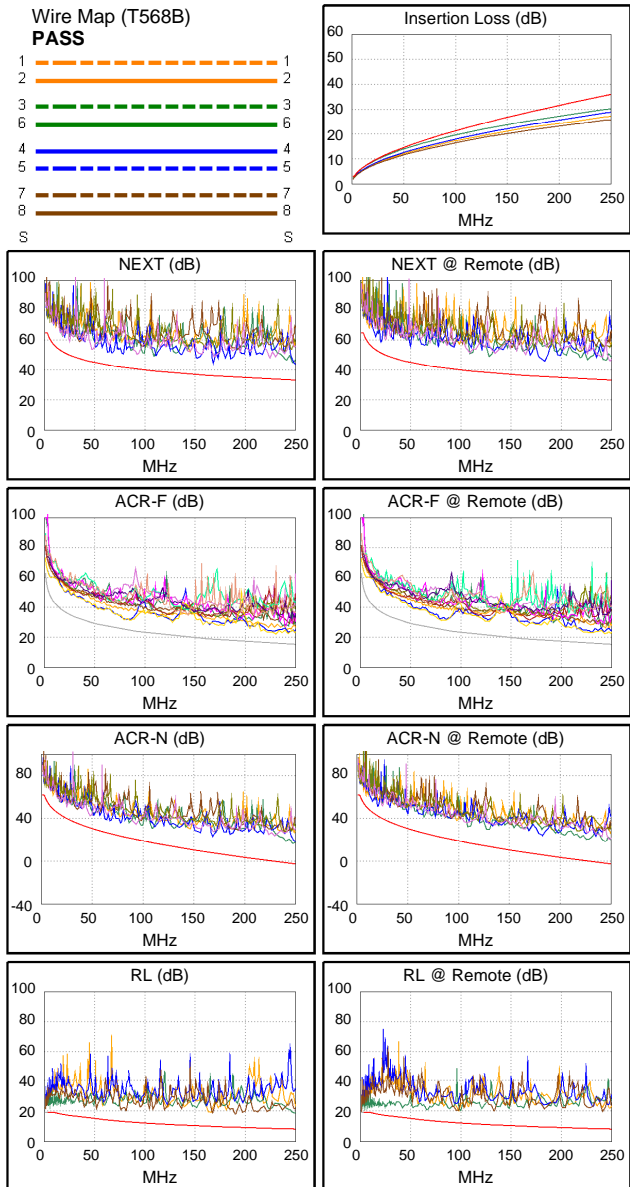
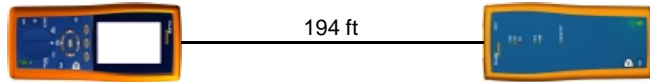
Date / Time: 09/08/2015 04:52:43 PM
Headroom 7.2 dB (NEXT 12-78)
Test Limit: TIA Cat 6 Channel
 Cable Type: Cat 6 UTP
 Calibration Date: 01/04/2007

Operator: ABC
 Software Version: 2.7400
 Limits Version: 1.9300
 NVP: 69.0%

Test Summary: PASS

Model: DTX-1800
 Main S/N: 8665105
 Remote S/N: 8665104
 Main Adapter: DTX-CHA002
 Remote Adapter: DTX-CHA002

Length (ft), Limit 328	[Pair 12]	194
Prop. Delay (ns), Limit 555	[Pair 36]	292
Delay Skew (ns), Limit 50	[Pair 36]	6
Resistance (ohms)	[Pair 12]	22.6
Insertion Loss Margin (dB)	[Pair 36]	5.7
Frequency (MHz)	[Pair 36]	250.0
Limit (dB)	[Pair 36]	35.9



	Worst Case Margin		Worst Case Value	
PASS	MAIN	SR	MAIN	SR
Worst Pair	12-78	12-78	12-78	12-78
NEXT (dB)	8.1	7.2	10.7	10.3
Freq. (MHz)	63.5	20.5	250.0	183.0
Limit (dB)	43.3	51.5	33.1	35.4
Worst Pair	45	12	12	45
PS NEXT (dB)	9.4	9.2	11.7	14.2
Freq. (MHz)	18.4	20.8	249.0	248.5
Limit (dB)	49.6	48.7	30.2	30.2
PASS	MAIN	SR	MAIN	SR
Worst Pair	78-12	78-12	78-12	78-12
ACR-F (dB)	5.9	6.1	5.9	6.5
Freq. (MHz)	231.0	81.0	231.0	242.0
Limit (dB)	16.0	25.1	16.0	15.6
Worst Pair	12	12	12	12
PS ACR-F (dB)	8.6	7.9	8.6	7.9
Freq. (MHz)	231.0	241.0	231.0	241.0
Limit (dB)	13.0	12.6	13.0	12.6
N/A	MAIN	SR	MAIN	SR
Worst Pair	12-78	12-78	12-45	12-45
ACR-N (dB)	10.9	9.0	18.8	20.2
Freq. (MHz)	2.9	20.6	247.5	244.5
Limit (dB)	61.6	42.2	-2.5	-2.2
Worst Pair	78	12	12	45
PS ACR-N (dB)	10.3	10.2	20.4	21.3
Freq. (MHz)	3.1	3.4	249.0	248.5
Limit (dB)	58.4	58.0	-5.7	-5.6
PASS	MAIN	SR	MAIN	SR
Worst Pair	36	36	12	78
RL (dB)	4.2	3.3	8.0	11.5
Freq. (MHz)	9.1	9.1	164.5	241.0
Limit (dB)	19.0	19.0	9.8	8.2

Compliant Network Standards:
 10BASE-T 100BASE-TX 100BASE-T4
 1000BASE-T ATM-25 ATM-51
 ATM-155 100VG-AnyLan TR-4
 TR-16 Active TR-16 Passive